

THE VERY HUNGRY CATERPILLAR SHOW – TECHNICAL RIDER 2018

SELLADOOR

WORLDWIDE

Created by Jonathan Rockefeller
Directed by Jonathan Rockefeller
Producer Rockefeller Productions
General Manager Selladoor Management

PREAMBLE

The technical rider is considered an essential portion of the performance contract. If changes must be made please ensure to contact Carl Vorwerk, General Manager, no less than three (3) weeks prior to load in. In the event of mutually approved changes, a finalized rider will be issued prior to load-in,

NOTES

- The following document sets out the technical requirements and support to be provided to the company by the venue.
- Any issues that arise upon initial reading of this document please contact the below persons and advise so that situations can be rectified in advance.
- The Company requires that any facilities involved in the production be available for its exclusive use from the beginning of the get in until the end of the get out.
- Additionally, the company requires notification 60 days in advance of any unrelated activities scheduled in the facilities during the time of its residence.
- Under no circumstances may the technical equipment used by The Very Hungry Caterpillar Show be shared with any other production during the time the company is in residence. This extends to: dressing areas, scenic elements (including masking), lighting equipment and sound equipment.
- Production and performance schedules are subject to change by mutual consent.

CONTACTS

Production Manager – TBD
Technical Manager – TBD
Marketing Initial Contact: Carl@selladoor.com
General Manager: Selladoor Management +1 904 477 5771 / carl@selladoor.com
Producer – Rockefeller Productions jonathan@rockefellerproductions.com

PERFORMANCE DESCRIPTION

The Very Hungry Caterpillar Show is a 60-minute theatre work for children aged between 1-6 years of age performed by three performers with approximately 75 puppets.

The show contains four of Eric Carle's books; Brown Bear, Brown Bear, 10 Little Rubber Ducks, The Very Lonely Firefly and The Very Hungry Caterpillar.

RUNNING TIME

60 minutes with no interval
House can be opened 30 minutes before the start of the show.
Latecomers are welcome at any time.

PERSONNEL

TOURING COMPANY

3 x Performers
1 x CSM / Backstage Assistant

1 x ASM / Performer Swing
1 x Technical Director/Lighting & Sound Operator

VENUE TO SUPPLY

Bump in Crew

VENUE shall designate a PRODUCTION TECHNICAL DIRECTOR with decision making authority, who will be accessible to PRODUCTION COMPANY at all times that they are in the theatre.

3 venue crew / technicians (4-hour call)

Crew minimums are based on the premise that all crew are able-bodied with professional experience, who will assist from one department to another. All crew are expected to have tools commensurate to their department. At least 1 of these crew members must be able to proficiently handle LX and Sound needs for the production particular to your venue.

VENUE IS RESPONSIBLE FOR LOCAL LABOR COSTS, IF THE CREW REQUIREMENT IS NOT MET, COMPANY RESERVES THE RIGHT TO HIRE ADDITIONAL CREW AT THE PRESENTER'S EXPENSE.

Bump out crew

2 staff (2-hour call minimum)

SOUND

The audio component of the work is programmed on a laptop running Q Lab.
The 3 performers are fitted with individual headset microphones.

VENUE TO SUPPLY

1x SM / FOH shout mic

Access to the venues full in house sound system normally used. Into this we will plug in the Macbook Laptop which runs Q-Lab for the show. **(Please advise in advance what input your sound desk will require jack / xlr etc)**

Minimum spec for the sound system would be along the following lines: *(2x FOH speakers (rigged), 4x 12" Floor speakers (non-rigged), 2x 10"/12" delay speakers (rigged), 1x Sub-woofer speaker)*

Sufficient on stage monitoring for performers

Sufficient backstage monitoring for backstage staff / performers

Production desk with power should be set up in the centre of the auditorium prior to load in OR adequate space made clear in the control booth

COMPANY TO SUPPLY

1x MacBook Pro (w/ Qlab3) with connecting cable for sound desk

4 x wireless microphone headsets & receivers.

OPERATING POSITION

The Lighting & Sound Technicians will operate audio from the control booth or FOH

STAGING - TBD:

The Very Hungry Caterpillar Show setting consists of;

Up to six flats with various opening doors and windows and numerous props

Minimum Stage Dimensions	24ft wide x 20ft deep
Height	Minimum of 10ft to underside of flown lamps

Stage Non-raked floor surface with no uneven areas, painted matt or low gloss black. (please note if a rake is present then Venue **must** supply sufficient wedges or anti rake devices to 'prop up' the flats so that doors will open properly)

Wings / There must be adequate wingspace to install on both SL and SR flats behind the proscenium or other suitable front stage area which can then be played upstage of. The space required is minimum 1ft depth and a height of 8ft and width of 6.5ft

Upstage Crossover There must be a minimum of 3 feet of space behind our upstage wall to enable backstage traffic and puppet placement.

COMPANY TO SUPPLY

All scenery elements
 All puppets and props
 All costumes

VENUE TO SUPPLY

Minimum of 15 x Sandbags or stage weights
 Sufficient stage rake wedges / devices as specified above
 4 x pairs of black legs (soft)
 1 x black up stage smoother / backcloth to be hung directly behind our set.
 (if identifiable from plans given to the company we will specify the exact hanging position / bar prior to load in)
 Adequate backstage blues particularly in wings
 1 preferably 2 rolling portable wardrobe racks for use in SL & SR wings

A soft goods pre-hang must be completed prior to Company load-in.

LIGHTING - TBD

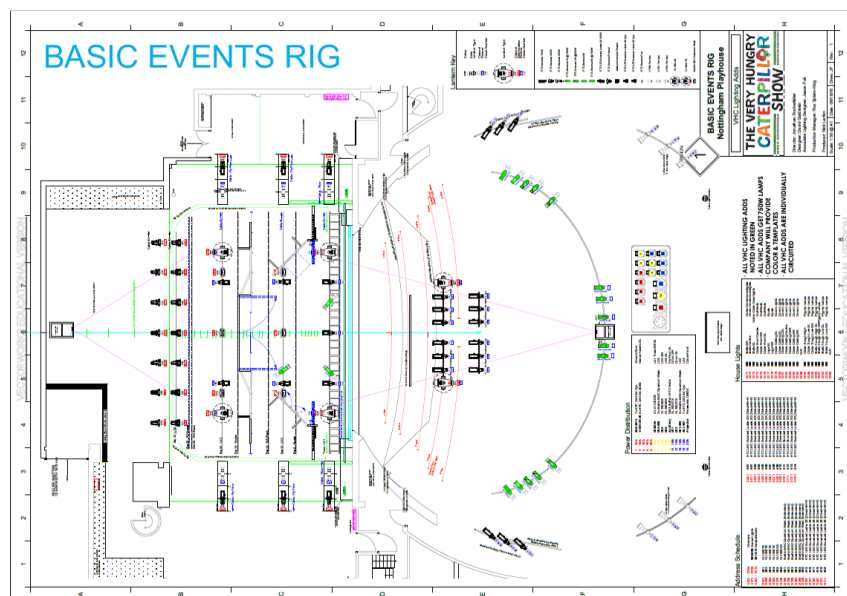
All venue provided LX to be pre-rigged, colored, patched and flashed prior according to the company's plans and instructions prior the Company's arrival at the venue.

All local fixtures must have current test and tag certification, complete sets of shutters, barn doors and safety chains.

Production desk with data and power should be set up in the centre of the auditorium prior to load in with all universes of data run and adequate desk lighting OR adequate space made clear in the control booth.

Please include a complete lighting/sound inventory when returning this technical rider.

EXAMPLE PLAN



**PLS NOTE THIS PLAN IS AN EXAMPLE ONLY.
A NEW PLAN WILL BE FORWARDED IN DUE COURSE**

COMPANY TO SUPPLY

Lighting plan 2 weeks prior to bump in or sooner
All special gobos
4 custom glass dots gobos and 4 'A' size gobo holders
Two custom glass fireworks gobos (with gobo holders and color)
One Gam Film FX reel (and gel frame with color)
2 stock Metal Water gobos, and 'B' size gobo holders (and gel frame with color)
One Iris
Two stock metal moonlight gobos, and b size gobo holders (and gel frame with color)
One stock glass sun gobo. (with gobo holder and color)
Practical lightbulb special.
Bubble machines

VENUE TO SUPPLY

1 x digital ETC Ion or ETC Element.

Onstage

Full stage Front Wash, Separable SL, C, SR – color can be OW or non-saturated color
Full stage Color Wash. Leds or Scrollers acceptable. Must be able to wash entire stage in BLUE, GREEN, RED, ORANGE, PINK, PURPLE, YELLOW

THE BELOW FIXTURES LISTED ARE AN EXAMPLE ONLY FOR OUR REQUIRED SPECIALS FOR THE SHOW

Balcony Rail:

3 x Source 4 50 Degree 750W (On Centre)
2x Source 4 36 Degree 750W (1/4 mark SL and SR)

Box Boom Position House Left

3 x Source 4 50 Degree 750W

Box Boom Position House Left

3 x Source 4 50 Degree 750W

FOH Position:

2 x Source 4 19 Degree 750 W (1/4 Mark SR and 1/4 Mark SL)

First Electric:

2 x Source 4 36 Degree 750W (Down Special on Centre, and 1/4 Mark SR)
1 x Source 4 19 Degree 750 W on 1/4 Mark SR
1 x Source 4 50 Degree 750W on 1/4 Mark SL

Second Electric:

1x Source 4 36 Degree 750 W on 1/4 Mark SR

Onstage dimmable power for lightbulb practical – if not possible then we must be informed and ordinary 'hot power' must be supplied for this fixture

Onstage dimmable power for bubble machines one stage left and one stage right – if not possible then we must be informed and ordinary 'hot power' must be supplied for these machines

The Gam Film FX effect will be rigged onto a source four FOH and this must have hot power to it.

IF THE VENUE DOES NOT HAVE THE ABOVE FIXTURES AND CANNOT SUBSTITUTE FROM THEIR FIXTURE LIST AN ITEM WHICH WILL 100% FULFILL THE NEEDS THEN THE COMPANY MUST BE INFORMED IMMEDIATELY

Sufficient cable to pre-rig including 240V and DMX

COLOUR / GOBO HOLDERS & FRAMES

Venue to supply all colors and frames and gobo holders aside from those specified above as being supplied by the company. Color can be Lee or Rosco to match whatever is in the rig plan.

OPERATING POSITION

The Lighting Technician will operate lighting from the control booth or FOH.

COMMUNICATIONS

VENUE TO SUPPLY

Comms units for:

- Lighting / Sound Techs (Operating position / control booth)
- CSM (wireless, backstage)
- Assistant Stage (wireless backstage)
- FOH mic for plotting and technical rehearsals (radio/wireless)

WARDROBE / DRESSING ROOMS

COMPANY TO SUPPLY

All costumes as required

VENUE TO SUPPLY

- 1 x washing machine
- 1 x dryer
- 1 x wardrobe rack
- 1 x iron and ironing board
- 2 x lockable dressing rooms each with:
 - Access to shower and toilet facilities, mirrors, chairs, and adequate lighting for make up

IF VENUE DOES NOT HAVE ANY LAUNDRY FACILITIES THEN COMPANY MUST BE MADE AWARE ASAP

TEMPERATURE

All areas designated for use by the production including the stage and dressing rooms should be maintained at a temperature between 68 and 73 degrees at all times while the company is in the venue.

HOSPITALITY

Load in/Tech Day meal for 3 crew and 3 cast.

OTHER REQUIREMENTS

A dedicated lockable office / space / dressing room for touring crew with access to internet (wifi preferred)

Green Room or access to

- Fridge
- Microwave
- Kettle
- Drinking water

FREIGHT

The Very Hungry Caterpillar Show is toured in a 12 foot box truck or equivalent. The venue agreed to obtain all permits and/or authorizations where necessary to allow the access to the loading doors six hours prior to and for the duration of the load-in, performance, and load out. In the event that our truck can not back up to the loading door it may be necessary to add additional loaders.

PARKING

Space for 2 vehicles, one a 12 foot box truck, MUST be provided by the venue during get-in, performance, and, load out. If there is no space at the theatre, Venue shall secure suitable parking elsewhere.

MERCHANDISE

Merchandise can be provided along with a banner for display by the selling area.
A member of venue staff will be required to sell merchandise on behalf of the company.

ADDITIONAL MATERIALS

Materials to be supplied to the production company in advance:

- House seating plan.
- Name, Phone Numbers, & email addresses of the Tech Director, Theatre Manager, Concessions/Souvenir Manager, and Venue Production Contact.
- Full Venue lighting and sound inventory.
- List of local orientation materials including emergency room, nearby hotels, and restaurants.
- Venue floorplan and section.
- Prevailing Union Contracts, if any.

Materials to be supplied to the venue in advance:

- Stage, LX, and Sound Plot
- Late seating policy.

ISSUES

Please raise any issues regarding this rider as soon as possible with Carl Vorwerk;
Carl@selladoor.com | +1 904 477 5771

