



TECHNICAL PRODUCTION RIDER

2025

Dear promoter,

Thanks for having Atmosphere show at your venue/event. This is the combined tech and hospitality rider for their upcoming performance. It is an integral part of the contract.

This rider is updated regularly and pursuant to Production Manager's advance. Please check that you have the latest version, and disregard any previously released versions or "word of mouth" information, other than information sent only by those authorized by "Atmosphere" Production.

Any possible options and alternative for the following equipment, other than what is listed herein, must meet "Atmosphere" Production Manager's approval.

We're looking forward to working together, so that we can put on a great show for the fans.

**Best regards,
The Atmosphere Show**

Pages included on this document:

1. Cover and presentation
2. Content and contacts
3. P.A system, FOH requirements & Monitor requirements
4. Microphones, Miscellaneous requirements, Lighting Design & requirements 1
5. Lighting Design & requirements 2
6. Lighting Plot
7. Freight, visual, and stage requirements
8. Facility and stagehand requirements
9. Hospitality rider (security and accommodation)
10. Hospitality rider (catering and freight)
11. Hospitality rider (transportation and wardrobe)
12. Hospitality rider (tech info and signatures)

CONTACTS

INTERNATIONAL MANAGEMENT

PRODUCTION MANAGER

OFFICE MANAGER

Ilan Azriel ilan1azriel@gmail.com

TECHNICAL MANAGER

Itamar Houri lampy007@gmail.com

The show:
70 minutes performance (no intermission)
Interactive activity at the hall's lobby before/after the performance
Target audience: families
Voiceover: possible in any language

P.A. System Requirement

P.A. System: Professional quality, preferably flown, stereo four-way speaker system (three way + subwoofers), capable of delivering 110 db RMS distortion-free, wide band audio, evenly distributed throughout the venue, plus full range front fills and delay systems where needed.

Software/hardware control for the sound system must be available at front of house position and operated by a qualified system engineer, available to assist our FOH engineer during setup, sound check, show time, and any other time required by Atmosphere Show.

***Quantity depending on venue/audience capacity and subject to Tech Manager’s approval.**

FOH Control Requirement

Atmosphere Show does not require a specific sound console model. However, the console must be a high-quality console of a known brand and to be approved by Atmosphere Show tech manager.

- Our FOH sound engineer will operate the show with the assistance of a local sound engineer.

FOH Mix position: The front of house mixing position will be located facing the stage, ideally at the center of the venue or directly in line with one side of the main PA system, no closer than 10 meters (30 feet) and no further than 30 meters (100 feet) from stage. There must be no visual obstruction between the stage and the FOH mixing position and between the main PA hang and the mixing position.

The FOH position at indoor venues **will not** be located in booths, side corridors or under balconies, unless equipped with near field monitors, compatible and time-aligned with the main sound system. Proper protection (security barriers etc.) spare AC outlets and lighting are necessary for the FOH work space, and seating arrangements must be taken in advance to allow sufficient space for the equipment and the FOH engineer to operate safely.

- Sound, light, and video operators will share the same space with a total of 2 meter empty space for our equipment (laptops, video projector, lighting desk, etc.)

Monitor Control Requirement

- *Monitors will be operated by the FOH engineer*

monitors:

- 4 units of 12 inch 2-way stage wedge, positioned on head height tripods and located in accordance to production's needs

- **All monitors can be on the same aux send.**

- **MONITOR MIXES:**

Aux out	Position	MIX
1	STAGE	MON 1

Microphones

We require 1 wireless handheld microphones (+ 1 spare) tuned on separate, clean frequencies. Make sure to have new batteries plus sufficient spares.

INPUT AND FOH CHANNEL LIST			
SPLITTER	NAME	MIC	NOTES
1	Stage mic	W.L. 1	-
2	COM 1	Audio interface 1	-
3		Audio interface 2	-
4	Back up COM 2	Audio interface 1	-
5		Audio interface 2	-
6	SPR	W.L. 2	-

MISCELLANEOUS accessories

1. **Comms:** The comms will include a 6-station wireless intercom on a separate channel, with beacon lights for silent call, connected between Backstage and FOH desk positions for exclusive use by our crew.
2. **TalkBack:** 1 Shure SM58 in FOH console for T.B use.

LIGHTING Design & Requirements

The lighting plot (see page 8) shall serve as a part of this Rider. The lighting equipment is required to be supplied in its entirety, including all materials required for the implementation of the Atmosphere Show lighting plot, by the PROMOTER at his expense.

Whether the venue cannot support the necessary AC power current required for the show, promoter will provide a qualified electrician to tie-in the power needed at the beginning (or before) of the scheduled Load-In time.

House lights will be operated by a local stage hand according to Atmosphere Show stage manager's guidelines, or connected to the lighting desk and operated by Atmosphere Show LD.


Lanterns Qty				
Number	Qty	Company	Model	Notes
1	15	Robe	ParFect 150™ FWQ RGBW	Or equivalent*
2	4	Robe	Tarrantula™	Or equivalent*
3	8	Robe	ColorStrobe™	Or equivalent*
4	1	Robe	iFORTE® FS	Or equivalent*
5	10	Robe	LEDBeam 350™	Or equivalent*
6	1		2mX2m RGB LED Dance floor	Or equivalent*

* As specified on page 7 and must be approved by company's Tech manager

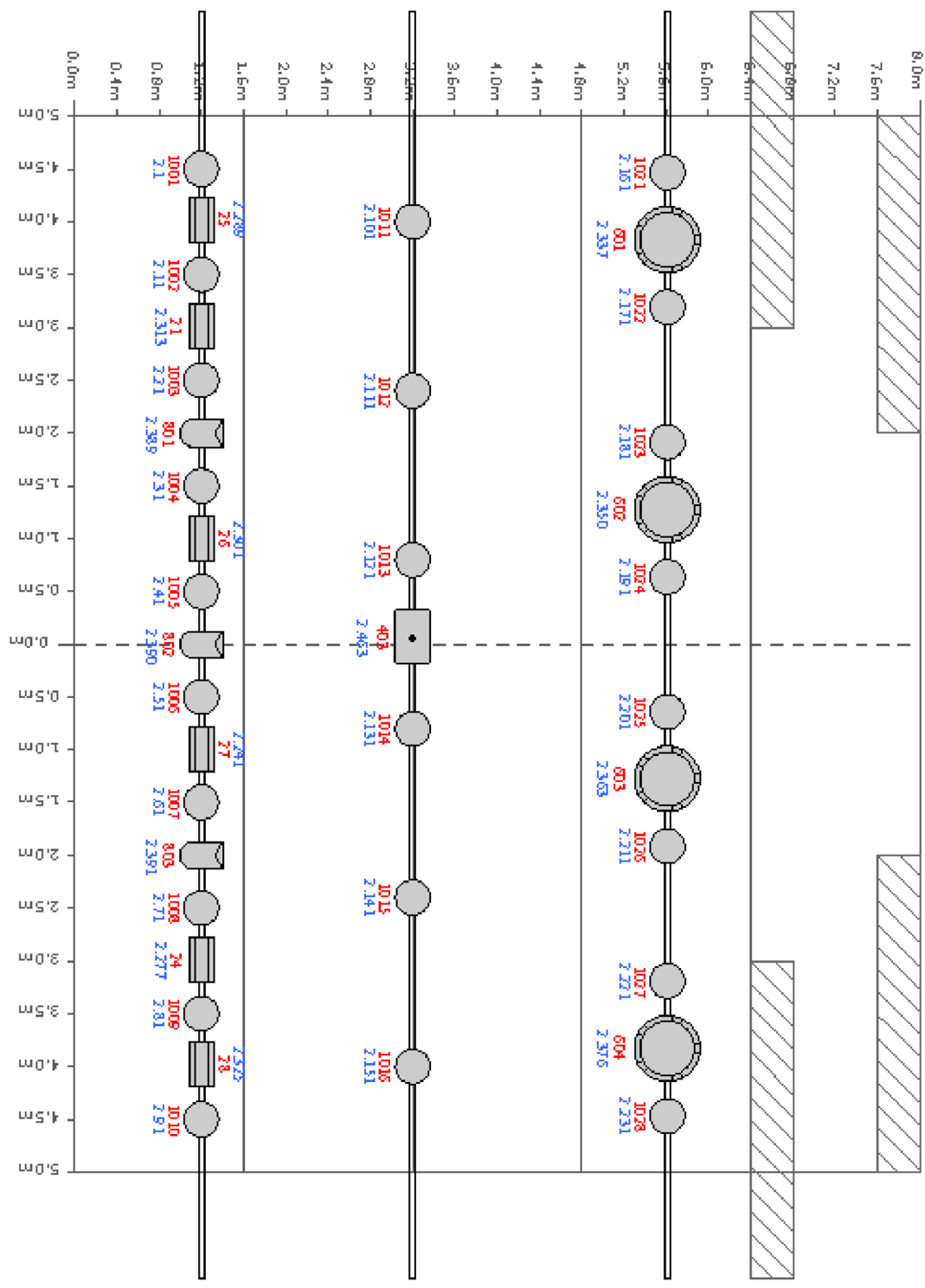
Other Equipment				
No	Qty	Company	Model	Notes
1	2	ATC	2m Black pipe	Or equivalent*
2	2	ATC	Floater for pipe	Or equivalent*
3	12	Look	Look Fan DMX	Or equivalent*
4	2	Look	Unique 2.1	Or equivalent*
5	8	-	Pro air blower	Or equivalent*
6	1	-	DMX Motor 10kg	Or equivalent*
7	2	-	Portable/ Ventilator Blower 24"	Or equivalent*
Cables & motors and MISCELLANEOUS as necessary				

- All lanterns must have clamps, and safety bonds.

Itamar Hourli
Lighting Designer & Stage Production
+972 54 4556118
Lampy007@gmail.com

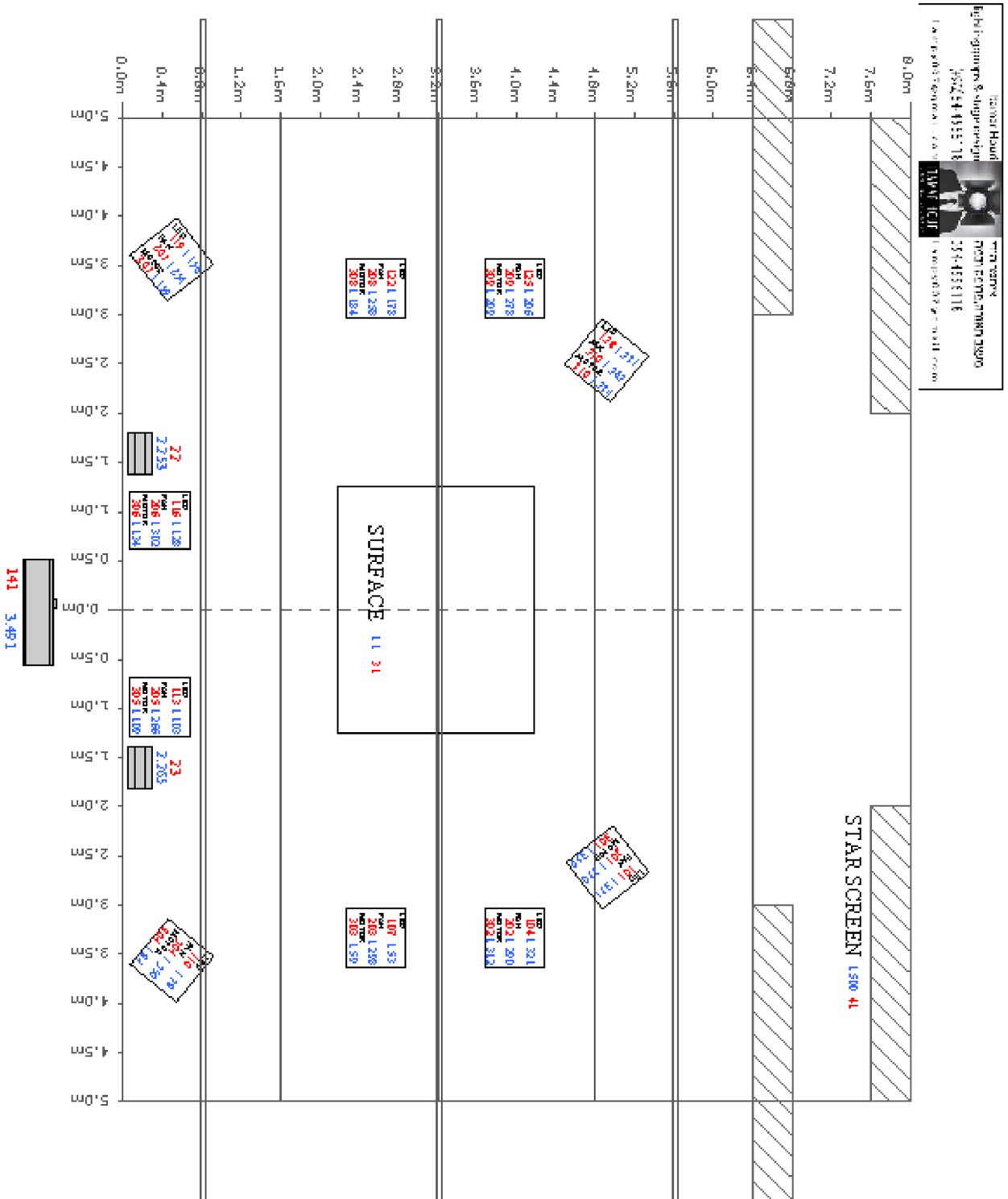


ITMATECH
TECH PRODUCTION
7000 PETERLIN DRIVE
234-4556118
www.itmatech.com



Symbol	Name
[Symbol]	Follow spot
[Symbol]	LED Ball
[Symbol]	Earth Motor
[Symbol]	Big LED Fan
[Symbol]	PAR 64
[Symbol]	"Star" Fan
[Symbol]	Q7

Item Name	Qty	Part No.	Notes
Follow Spot	1	1011	
LED Ball	1	1012	
Earth Motor	1	1013	
Big LED Fan	1	1014	
PAR 64	1	1015	
"Star" Fan	1	1016	

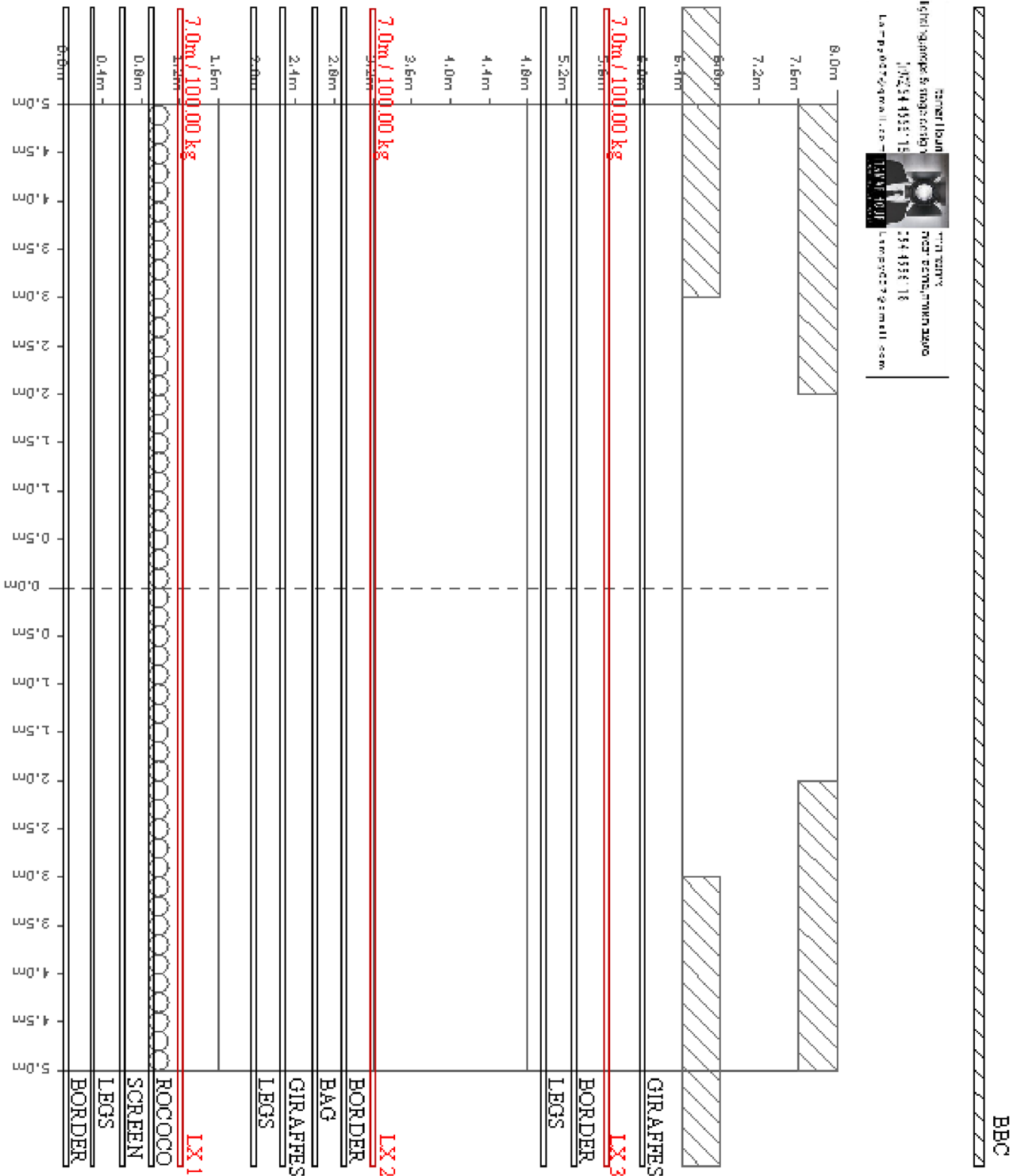


ITAMAR HOURI
TECH PRODUCTION MANAGER
+972544556118
LAMPY007@GMAIL.COM

ITAMAR HOURI
TECH PRODUCTION MANAGER
+972544556118
LAMPY007@GMAIL.COM

Symbol	Name
	Follow spot
	LED Ball
	Earth Motor
	Big LED Fan
	PAR 64
	"Star" Fan
	Q7

LED Light Fixture		Foliage	
Model	Part No.	Model	Part No.
Quantity	Location	Quantity	Location
Notes		Notes	
Operator		Operator	
Technician		Technician	



ITAMAR HOURI
TECH PRODUCTION MANAGER
LAMPY007@GMAIL.COM
+972544556118

Symbol	Name
	Follow spot
	LED Ball
	Earth Motor
	Big LED Fan
	PAR 64
	"Star" Fan
	Q7

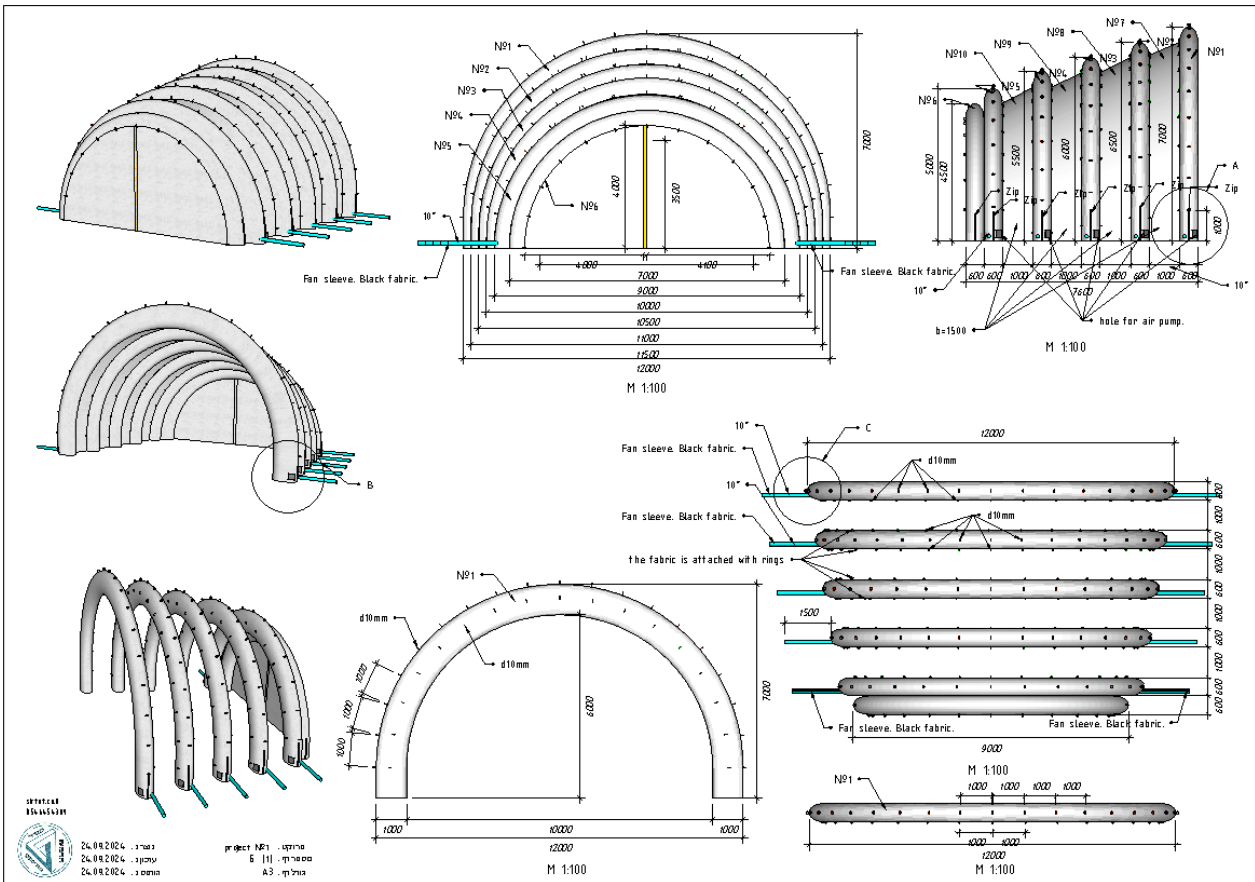
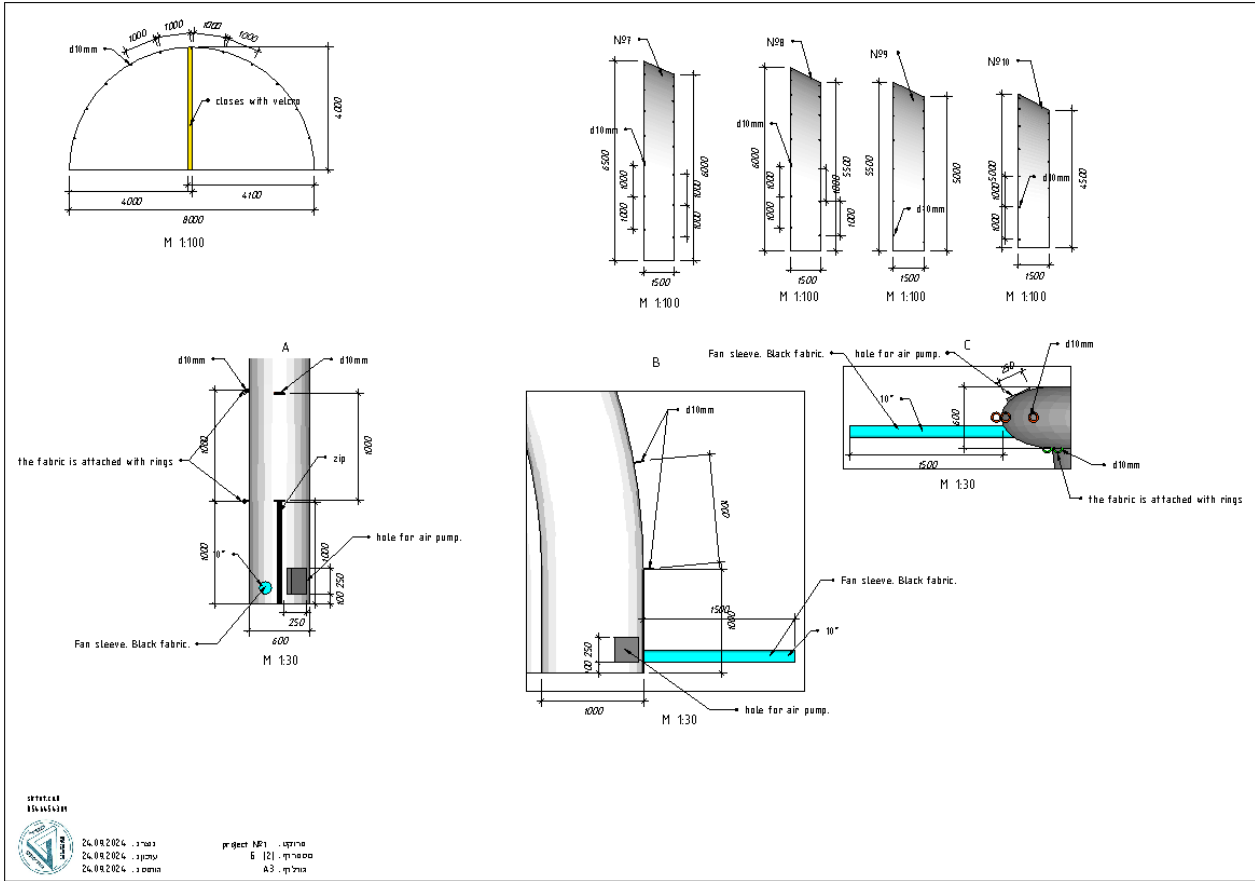
Item Name	Qty	Unit
Follow Spot	1	Each
LED Ball	1	Each
Earth Motor	1	Each
Big LED Fan	1	Each
PAR 64	1	Each
"Star" Fan	1	Each
Q7	1	Each

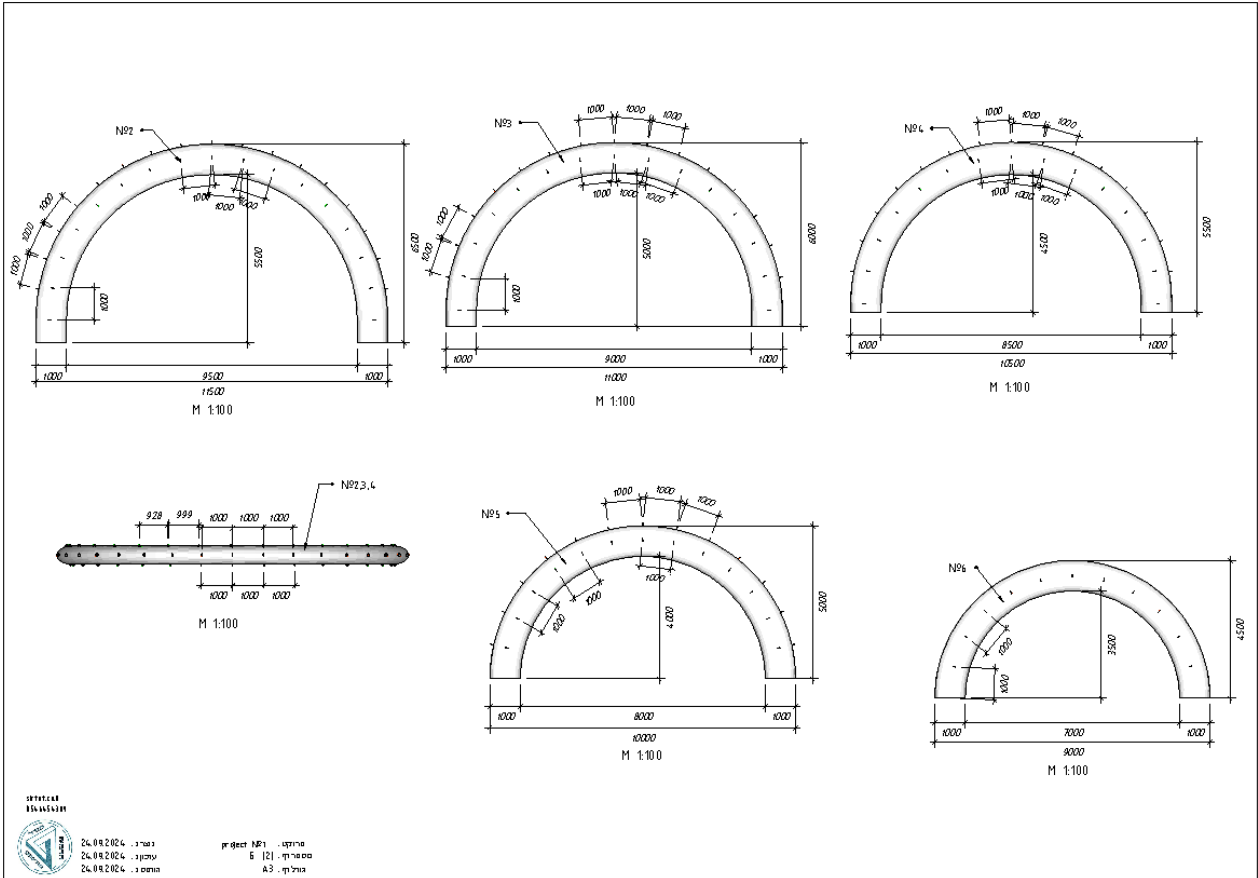
Visuals Requirements

- we require a video projector of at least 10000 lumens (or sufficient for a very bright image on a dark stage).
- The projector must be able to capture: 10 meter wide and 7 meter high image (the entire stage)
- Standard HDMI connector to be placed in FOH console.
- No video screen is required
- All video content will be operated by our FOH engineer with the assistance of a local video technician.
- Projector can be positioned in FOH console if needed
- a table suitable for this workspace will be needed

Stage Requirements

- A. Minimum stage dimensions: 10m wide and 8m deep + wings of 3m on each side and **upstage**. Stage must be black wooden floor, with no splinters and/or screws. and covered with black PVC dance floor (marley floor).
- B. 6 LX bars / pipes for lighting / stage equipment as described in stage plot.
- C. Stage tower should be at least 10m high.
- D. The stage should be swept and mopped after set up and in between the shows, scheduled with the Company's Technical manager.
- E. Stage should be Air conditioned as long as people are working in the venue.
- F. PROMOTER shall provide adequate masking to completely mask the backstage area from the view of all audience members. Masking should be black and hung in accordance to plan, to be approved by Technical Manager. Any masking matters must be pre-approved by COMPANY's Production Manager.
Promoter shall supply:
 - a. Black backdrop in the size of stage (min-12m wide and 6m high)
 - b. 4 black 12mX3m borders
 - c. 4 sets of black 3mX6m lags (total of 8 lags)
- G. 2 SET of stairs (color black) in front of stage to allow actors to go from stage to FOH during the show.





Facility and Stagehand Requirements

The following is an ESTIMATE of the number of local crew needed and the approximate call times. Actual numbers of personnel may vary depending on local circumstances. Please advise COMPANY'S Technical Manager of local prevailing rules (i.e.4/8 hr. min. etc.).

COMPANY Production Management shall establish the actual call in advance of the load-in date. Please note that the COMPANY'S Production LD and Sound Engineer will run the Console unless otherwise agreed in writing.

1. PRE-HANG

The Pre-Hang and Focus calls shall be established on a venue, by venue basis dependent on availability and need.

The pre-hang and focus take 5 hours and will take place according to predetermined schedule.

COMPANY requires sufficient Electricians, to fully hang, cable, circuit, and focus the lighting plan and to place theater masking in location per the line plot as amended by the COMPANY'S Technical Manager.

2. LOAD-IN

Load-In shall begin 5 hours prior to the advertised curtain. **(or before if previously scheduled)**

The Load-In should begin with minimum:

4 - Stage hands + Lobby

1 – Electricians (light)

1 – Sound

3. SHOW CALL

1 – LX + video Tech

1 – Sound Tech + RF Tech

4 - Stage Tech

*The PROMOTER shall not allow any unauthorized personnel into the areas under the use of the Company's production.

During the performance the smoke detector on the stage area, must be turned off.

An option of playing music in the reception hall, Prior to the show, may be requested.

4. LOAD OUT

Load out will take approximately 2.5 hours.

HOSPITALITY RIDER

The PROMOTER agrees to furnish at his own expense the following:

1. SECURITY

- A. PROMOTER shall guarantee security of all COMPANY equipment and personal belongings from load-in to load-out periods, as well as when the COMPANY'S personnel are out of the venue.
- B. PROMOTER shall be held responsible and accountable for all equipment and property of the COMPANY from the time of load in until the completion of load-out.
- C. A voice announcement in local language shall be broadcast via the performance audio system before commencement of the performance.
- D. Promoter shall make sure that all stage and backstage area will be closed to the public before, during and after the show. Promoter shall issue and distribute backstage tags only to authorized personnel. In order to enforce this clause, the promoter shall post a security guard at the back stage on each performing day.
- E. PROMOTER shall be responsible for enforcing the policy of CAMERAS, VIDEO AND RECORDING EQUIPMENT ARE STRICTLY PROHIBITED at each performance.

2. HOTELS / ACCOMMODATIONS

- A. The PROMOTER shall provide at its sole cost hotel accommodation for entire COMPANY from day of arrival until day of departure at 4 star international level properties.
- B. PROMOTER and or PROMOTER'S designated representatives shall provide and pay for additional hotel rooms, as required prior to and on or after the tour performance period, if required for COMPANY'S personnel working on pre-production requirements for and or load-out responsibilities, for the tour or financial settlement of the tour.
- C. The PROMOTER shall supply a list of hotels to the CPM, which shall be subject to CPM'S written approval. Such approval of the hotel shall be absolute.
All the hotel rooms must be centrally located in the cities and have free Hi speed Internet access. Breakfast - shall be a full buffet breakfast served in the hotel.
- D. The specific hotel requirements are as follows:
7 double rooms, according to tour list as applied by the Company prior to signing this rider.
- **Company will include 7-9 cast and crew**
- E. In sit down of 21 days in the same venue the promoter can provide at his sole cost apartments for the entire COMPANY from day of arrival until date of departure, all the apartments must be centrally located and fully equipped with an oven, refrigerator, air conditioner, microwave, washing machine, drier, phone, detergents, toilet paper, towels and sheets, key for every member.
- F. Each member of the Atmosphere Show COMPANY will have his own room, and the tour manager will have his own apartment for all production uses.
- G. The apartments will be cleaned once a week and sheets and towels shall be changed twice a week.

3. CATERING

- A. The catering rider is attached hereby and advanced based in the meal requirements of the agreement hereto. PROMOTER is to provide hotel breakfast in the hotel.
PROMOTER shall also provide the pre-show and dressing room requirements:
- mineral water (min 12 bottles mineral water per day)
 - fresh fruits and vegetables
 - Kettle, sugar, coffee, tea, milk, soy milk
 - Plates, knives, tissues, and waste bins
- B. ALL DAY REQUIREMENTS – A sufficient amount of the items listed below must be available for the entire staff from beginning of load in through the end of load-out.
- a) Coffee service to include cups, sweeteners, utensils etc.
 - b) Hot water, Tea, Milk etc
 - c) Fruits
 - d) mineral water
 - e) Juices and soft drinks

4. WARDROBE and DRESSING ROOMS

Promoter shall supply a local wardrobe assistant, who shall be available 6 hours prior to the show and after, for laundry, ironing, and mending of clothes and costumes, according to the schedule as agreed by both parties.

The PROMOTER will cover all expenses regarding laundry and wardrobe assistance.

COMPANY requires minimum of 2 dressing rooms for the cast, each room should be suitable for a min of 3 persons.

All dressing rooms must be well ventilated and heated or cooled as necessary, and equipped with tables, chairs, mirrors, mirror lights, hot and cold running water, and toilets. These rooms must be separate and private from the public.

IMPORTANT TECHNICAL INFORMATION

It is extremely important that the technical rider is examined & signed before the tour. If the Company arrives for technical rehearsals and discovers that the technical matters are not as agreed, we cannot guarantee that a performance will take place.

This rider is attached to and part of the contract between THE Atmosphere SHOW (hereinafter referred to as 'artist' or 'company') and _____ (hereinafter referred to as 'PROMOTER'). Unless otherwise stated, the term "provide" means PROMOTER is to provide and pay for such item.

Read, Approved and signed by

Date